



CIN No: U38210RJ2013PLC042232

SHUBHSHREE BIOFUELS ENERGY LIMITED

(Formerly Known as Shubhshree Bricks Pvt. Ltd.)

Reg.Address: Plot No. 8, Ganesh Vihar B, Pandit T.N. Mishra Marg, Nirman Nagar, Shyam Nagar, Jaipur - 302019, Rajasthan, India.

Contact No: 9799 998 880 | **E-Mail:** shubhshree@biomassfuel.co.in

Website: shubhshreebiofuels.co.in

To,
The Manager
Listing and Compliance Department,
NSE Emerge
National Stock Exchange of India Limited
Exchange Plaza, Plot no. C-1, G-Block,
Bandra-Kurla Complex, Bandra-East,
Mumbai-400051.

Symbol Name: SHUBHSHREE

Subject: Investor/ Corporate presentation pursuant to Regulation 30 of the SEBI (Listing Obligations and Disclosure Requirements) Regulations, 2015

Dear Sir/ Ma'am,

Pursuant to Regulation 30 of the SEBI (Listing Obligations and Disclosure Requirements) Regulations, 2015, we submit herewith the Investor/ corporate Presentation of Shubhshree Biofuels Energy Limited.

The same may also be accessed on the Company's website i.e. www.shubhshreebiofuels.co.in. This is for your records and information.

Thanking you,
Yours faithfully,

For SHUBHSHREE BIOFUELS ENERGY LIMITED

NIDHI KHANDELWAL
COMPANY SECRETARY & COMPLIANCE OFFICER
(M. No.: A31808)
Encl: As above

Shubhshree
Biofuels Energy Ltd.



Shubhshree Biofuels Energy Ltd.

Empowering Industries, Sustaining Future



Website
www.shubhshreebiofuels.co.in

IR 2025

“India’s Leading Listed Biomass Fuel Company”

Company Profile

Shubhshree Biofuel, based in Jaipur, Rajasthan, is **India's only listed company** exclusively focused on solid bioenergy. Established in 2021, the company has quickly emerged as a **first-mover** in the biomass fuel space, converting agricultural waste into high-quality pellets and briquettes that serve as a **100% substitute for coal**.

With a fully integrated “**farm-to-factory**” model, Shubhshree ensures **complete control over its supply chain** — from raw material sourcing to processing and delivery — enabling consistent quality, operational efficiency, and reliable fulfillment. The company operates with robust SOPs and quality systems and boasts an annual production capacity exceeding 5 lakh metric tonnes.

Catering to **power plants, large industries, and MNCs** across multiple states, Shubhshree offers a clean, cost-effective alternative to fossil fuels. With sustainability and innovation at its core, the company is actively driving India's transition toward **greener energy solutions**.



Key Facts and Figures



12+
Years
Experience



160,000+
Tonnage
Manufactured



1,000+
Tonnes of
supply per day



1500+
Clients
Served



PAT 808.93
(₹ in Lakhs)



10 +states
covered with
proper
logistics



3,00,000 Tonnes
of briquettes &
pellets supplied to
customers till
date



5,000+
Employed Farmers



Market Cap - 195 Cr



EBITDA 1126.87
(₹ in Lakhs)



2,50,000 Farmers will have a positive impact on life; mitigate CO2 emissions, save water, & improve quality of life



Milestones



2021

Operations Commenced

- Launched supply of biomass briquettes & pellets
- Raw material collected from 16+ villages

2024

High-Volume Supply Achieved

- Scaled to 600 tonnes per day supply

2022

Community Impact & Growth

- 1,500+ farmers employed through collection & processing
- Initial deliveries expanded to 5 states

National Expansion

- Delivery network extended to 10+ states
- Commissioned 3 new plants in:
 - Madhya Pradesh
 - Chhattisgarh
 - Haryana
- Increased production capacity to 1,000+ tonnes per day

2025



Core Values

Our Mission

Our mission is to be a leading agricultural recycling company, focused on technology, sustainability, empowerment, and innovation—ensuring inclusive growth, value creation, and strong environmental and social responsibility.

Our Vision

Shubhshree Biofuels Energy Ltd aims to lead India's biofuel sector by delivering quality, sustainable energy solutions that create customer value and positively impact both micro and macro environments.

Our Values

At Shubhshree Biofuels Energy Ltd, we value trust, passion, fairness, and relationships—fostering integrity, sustainability, and partnerships that drive long-term stakeholder value and contribute to a cleaner, greener future.

Profile of Management



Sagar Agarwal

Chairman & Managing Director.

He is also one of the promoters of the company. He has completed his Bachelor of Commerce in the year 2012 from the University of Rajasthan. He has a work experience of around 10 years in the Biomass and Biofuels Industry & primarily looks after the overall biomass manufacturing, Financial Management and resource allocation etc.



Anurag Agarwal

Promoter, Whole Time Director

He has completed his Bachelor of Commerce in the year 2012 from the Rajasthan University. Having a work experience of over 9 years out of which 6-year experience of bricks manufacturing and 2.5 Year experience of Biomass Manufacturing & primarily looks after the overall biomass manufacturing.



Aastha Agarwal

Promoter and Non-Executive Director

She has completed her Post Graduate diploma in Management in the year 2014 from Jagan Institute of Management Studies, Delhi, India. She has over 3 years of experience in Digital Marketing Industry.

Upasana Srivastava Dattani

Promoter and Non-Executive Director

She has completed her Master of Business Administration in the year 2011 from Indian School of Business & Economy, Delhi, India. She has more than 15 years of experience in as HR Leader with strategic and inventive thinking who transforms company objectives into human resource strategies that promote performance, profitability, growth.



Rajesh Jain

Independent Director

He has completed his B.A. Part. He has an experience of around 14 years in the field of hotel operations, finance, marketing and guest services.



Vijay Kumar Jain

Independent Director

He has completed his BCom. He has an experience of around 15 years in Biomass manufacturing and production, sales and distribution.



Group companies

Shubhshree Recycling Private Limited

Brief: Private Limited company incorporated on January 15, 2025 . Its main objective is manufacturing of biomass pellets and briquettes.

Incorporated In: Rajasthan

Type: Wholly Owned Subsidiary

Holding: 100% by parent company

Ecodensify Solutions Private Limited

Brief: Private company incorporated on January 9, 2025. Its main objective is manufacturing of biomass pellets and briquettes.

Incorporated In: Madhya Pradesh

Type: subsidiary

Holding: 51% by parent company

Ruralgreen Energy Private Limited

Brief: Private company incorporated on January 11, 2025. Its main objective is manufacturing of biomass pellets and briquettes.

Incorporated In: Chhattisgarh

Type: subsidiary

Holding: 51% by parent company



Quality Control and Certifications



AN ISO 9001:2015
CERTIFIED COMPANY



Certificate of Registration

This is to certify that

SHUBHSHREE BIOFUELS ENERGY PRIVATE LIMITED
PLOT NO 8, GANESH VIHAR-B, PANDIT TN MISHRA MARG,
NIRMAN NAGAR, JAIPUR- 302019, RAJASTHAN, INDIA

has been independently assessed by QRO
and is compliant with the requirement of:

ISO 9001:2015
Quality Management System

For the following scope of activities:

MANUFACTURER OF BIOMASS BRIQUETTES & PELLETS

Date of Certification: 19th January 2024
1st Surveillance Audit Due: 18th January 2025
2nd Surveillance Audit Due: 18th January 2026
Certificate Expiry: 18th January 2027

Certificate Number: 305024011915Q



Head of Certification

Validity of this certificate is subject to annual surveillance audits to be done successfully on or before 365 days from date of the audit.
(In case surveillance audit is not allowed to be conducted; this certificate shall be suspended / withdrawn).
The Validity of this certificate can be verified at www.qrocert.org
This certificate of registration remains the property of QRO Certification LLP, and shall be returned immediately upon request.

India Office : QRO Certification LLP
142, IInd Floor, Avtar Enclave, Near Paschim Vihar West Metro Station, Delhi-110063, (INDIA)
Website : www.qrocert.org, E-mail : info@qrocert.org



Government Backing & Institutional Support

Shubhshree Biofuels is well-positioned to capitalize on a favourable regulatory environment and robust institutional support driving bioenergy adoption across India:

Capital Subsidies & Viability Gap Funding:

- Up to ₹45 lakh/MW for biomass pellet/briquette plants; additional support covering ~20% of project cost.

Special Assistance for Torrefied Plants:

- ₹42 lakh/ton support for torrefied pellet manufacturing under MNRE programs.

Tax & Fiscal Reliefs:

- Includes 40% accelerated depreciation, 5–12% GST on machinery, and 10-year exemptions from electricity duty, energy cess, and stamp duties.



Financial Support & Incentives



Regulatory Push for Biomass Integration

Thermal power plants are now required to co-fire **5% biomass from FY 2024–25, rising to 7% by FY 2025–26**. Non-compliance attracts penalties—creating assured demand for biofuels.

Concessional Land & Capital Aid:

States like MP and UP provide land, road, and utility infrastructure at **subsidized rates**—backing decentralized bio-refinery models aligned with Shubhshree's expansion.



State-Level Infrastructure Support



Market Enablement & Financing

Priority Sector Lending:

- Biomass fuel manufacturing now falls under priority lending—easing credit access.

Institutional Procurement Channels:

- Inclusion of biomass on GeM ensures steady institutional offtake pipelines.

“Momentum in the industry has been building steadily over the last 3 years—starting with awareness in 2022, backed by regulatory rules in 2023, and strict enforcement in 2025. This showcases increasing seriousness and strong forward action in this sector.”



Power Ministry asks states to formulate plans for biomass co-firing in power plants

To address the issue of air pollution and to reduce the carbon footprint of thermal power generation, the Ministry of Power issued a revised policy in October...



Govt temporarily eases mandate on biomass pellet co-firing in thermal power plants

The problem is that sufficient quantity of biomass pellet is not available in the country as of now, Union minister for power and renewable energy RK Singh said on August 4.

Moneycontrol / Aug 4, 2023



India Inc should take up large scale production of biofuels: Nitin Gadkari

Speaking at the CII Bio Energy Summit 2024 on Monday, road minister Nitin Gadakri said it is essential to make India atma nirbhar in fuel production in the wake of fluctuating fuel prices and global uncertainty.

Economic Times - Oct 14, 2024



India's biofuel sector transitioning from promise to partial implementation: Report - ET EnergyWorld

India's biofuel sector is slowly moving from a stage of promise to partial implementation, supported by strong government policies, rising need for decarbonization, and the push for rural value creation, according to a...

ETEnergyWorld.com | Jun 14



Mc Explains: India's biofuel focus and the challenges ahead

In a recent push to the biofuels industry, Finance Minister Nirmala Sitharaman announced financial assistance for the procurement of biomass aggregation machinery in the Interim Budget presented on...

Ministriesandnews | Sep 19, 2023



Power Ministry asks states to formulate plans for biomass co-firing in power plants

To address the issue of air pollution and to reduce the carbon footprint of thermal power generation, the Ministry of Power issued a revised policy in October...



Power plants to face penalty for not meeting biomass co-firing targets: Centre

Biomass from stubble, which used to be burned by farmers in open fields, can be used in coal plants to reduce pollution

Deccan Herald / Oct 5, 2022



December 8, 2023

Direction No. 92

**COMMISSION FOR AIR QUALITY MANAGEMENT
IN NATIONAL CAPITAL REGION AND ADJOINING AREAS**
17th Floor, Jawahar Vyapar Bhawan (STC Building)
Tolstoy Marg, New Delhi-110001

F. No. A-110018/01/2021/CAQM/Vol-VII/105 Dated: 03.06.2025

Subject: Directions under Section 12 of Commission for Air Quality Management in NCR and Adjoining Areas Act, 2021 – Mandatory use of paddy straw based bio-mass pellets in brick kilns located in the State of Punjab and non-NCR Districts of Haryana – for prevention and control of Paddy Stubble Burning – reg.

1. WHEREAS, Ministry of Environment, Forest and Climate Change, Government of India, in exercise of the powers conferred under Section 3 of the Commission for Air Quality Management in National Capital Region and Adjoining Areas Act 2021, has constituted the Commission for Air Quality Management in National Capital Region and Adjoining Areas (hereinafter referred to as the Commission);
2. WHEREAS, under section 12(1) of the Act, the Commission has powers to take all such measures, issue directions, etc., as it deems necessary or expedient for the purpose of protecting and improving the quality of the air in the National Capital Region and Adjoining Areas;
3. WHEREAS, Section 12 (1) of the Act, empowers the Commission to issue directions in writing to any person, officer, or any authority and such person, officer or authority shall be bound to comply with such directions;
4. WHEREAS, paddy stubble burning is a matter of grave concern due to its high impact on air quality in NCR and the Commission, since

Page 1 of 5

CAQM Direction No. 92
(dated 3 June 2025)

**Commission for Air Quality Management
in NCR and Adjoining Areas**

17th Floor, Jawahar Vyapar Bhawan,
Tolstoy Marg, New Delhi-110001

Dated: 03rd June, 2025

PRESS RELEASE

CAQM issues Statutory Direction mandating all brick kilns located in the districts beyond NCR area of Haryana and the State of Punjab for co-firing of paddy straw based pellets / briquettes;

Pursuant to Statutory Directions of CAQM, State of Haryana and Punjab aims for at least 50% co-firing of paddy straw based pellets / briquettes w.e.f. 01.11.2028

NEW DELHI:

In a vital step to combat the issue of open paddy stubble burning severely contributing to deterioration of air quality in the National Capital Region (NCR), the Commission for Air Quality Management in NCR and Adjoining Areas (CAQM) via Statutory Direction No. 92, has directed State Governments of Haryana and Punjab to mandate the use of paddy straw-based biomass pellets/ briquettes in all brick kilns located in the districts beyond NCR, as one of the means towards elimination of the practice of open paddy stubble burning. The Commission envisions complete elimination of open burning of crop residue, promoting clean, sustainable fuel alternatives in the industrial sector.

Aiming for 50% co-firing of paddy straw based pellets / briquettes, the Statutory Direction mandates all brick kilns located in the districts beyond NCR area of Haryana and the State of Punjab to adopt co-firing of paddy straw based pellets/ briquettes. The State Governments of Haryana and Punjab have been directed to ensure at least:

- 20% co-firing of paddy straw based pellets / briquettes w.e.f. 01.11.2025;
- 30% co-firing of paddy straw based pellets / briquettes w.e.f. 01.11.2026;
- 40% co-firing of paddy straw based pellets / briquettes w.e.f. 01.11.2027; and
- 50% co-firing of paddy straw based pellets / briquettes w.e.f. 01.11.2028

The State Governments of Punjab and Haryana have been instructed to issue requisite Directions/ Orders in this context mandating the above stipulation for use of paddy straw-based bio-mass pellets/ briquettes in brick kilns located in non-NCR areas. Further, action taken towards compliance of these Directions shall be apprised to the Commission every month.

Page 1 of 1

**Environment (Utilisation of Crop Residue
by Thermal Power Plants) Rules, 2023**
(G.S.R. 499(E), dated 11 July 2023)

Our Core Process Flow

“Delivering integrated biofuel solutions that align **producers, processes, and client needs.**”



Ensuring efficiency, quality, and client satisfaction at every step.

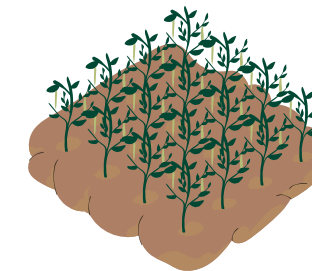
From Waste to Energy



Population growth in India is at **2% p.a.** **20 M** of **rice stubble** is produced annually in **Punjab** alone, **80% of which is burnt.**



2,50,000 Farmers will have a positive impact on life; **mitigate CO2 emissions, save water, & improve quality of life**

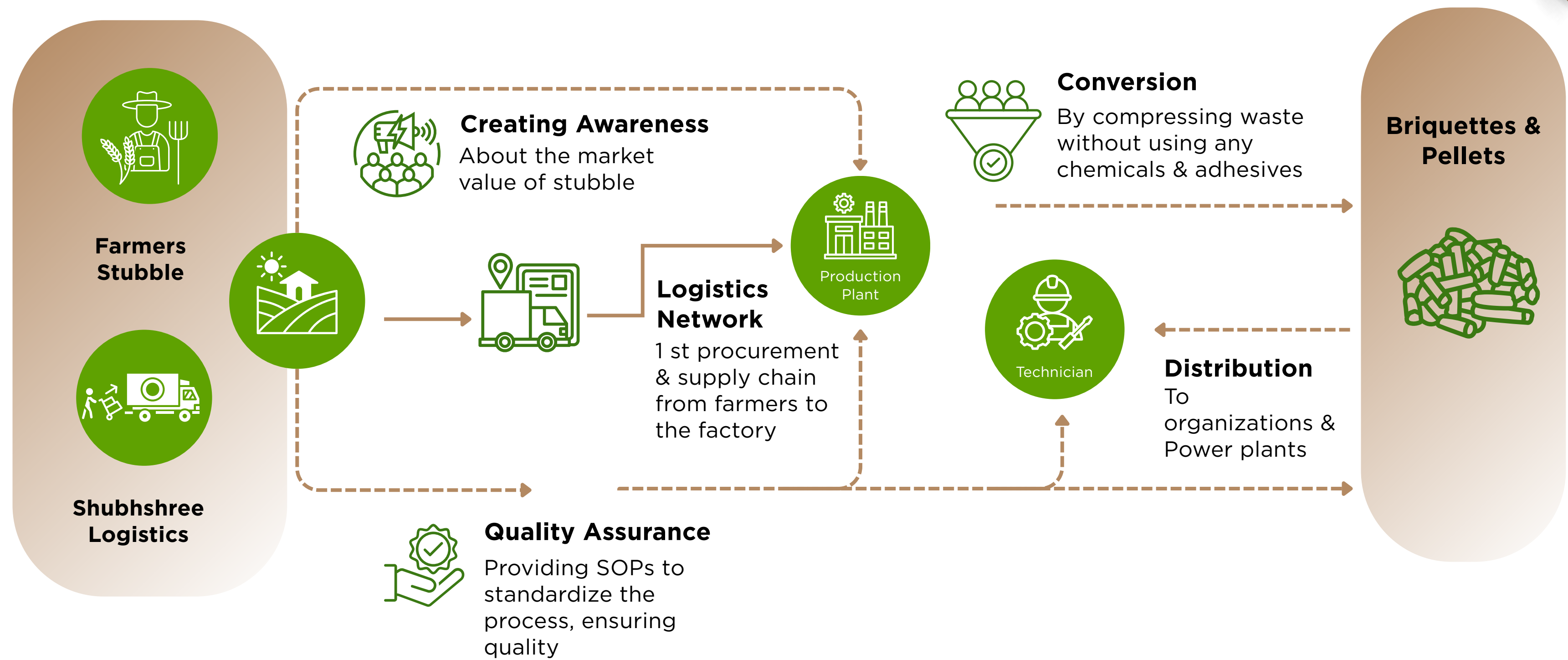


230M Tons Of crop residue is burned by farmers **North India** alone



Crop residue burning released **149.24 million** tonnes of carbon dioxide (**CO2**), **over 9 million** tonnes of carbon monoxide (**CO**), **0.25 million** tonnes of oxides of sulphur (**SOX**), **1.28 million** tonnes of particulate matter and **0.07 million** tonnes of **black carbon**.

End-to-End Supply Chain Control



Creating strong logistics connectivity to The Farmers

Shubhshree Biofuel For Farmers



Village Level
Entrepreneurs that is
farmers are our strength

- Village-level entrepreneurs–farmers help us in
- Biomass fuel collection from farms
- From farms, the stubble is processed & transported
- It goes to the collection centre
- Biomass briquettes and pellets are produced

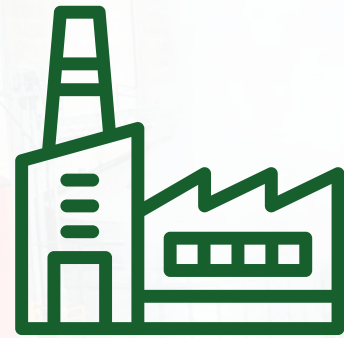


Farmers

- Quick Response
- No Downtime
- High Awareness
- Additional Revenue Stream
- Strong Logistics
- No Hassle

Creating a strong Ecosystem for Biomass Generation

Shubhshree Biofuel For Manufacturers



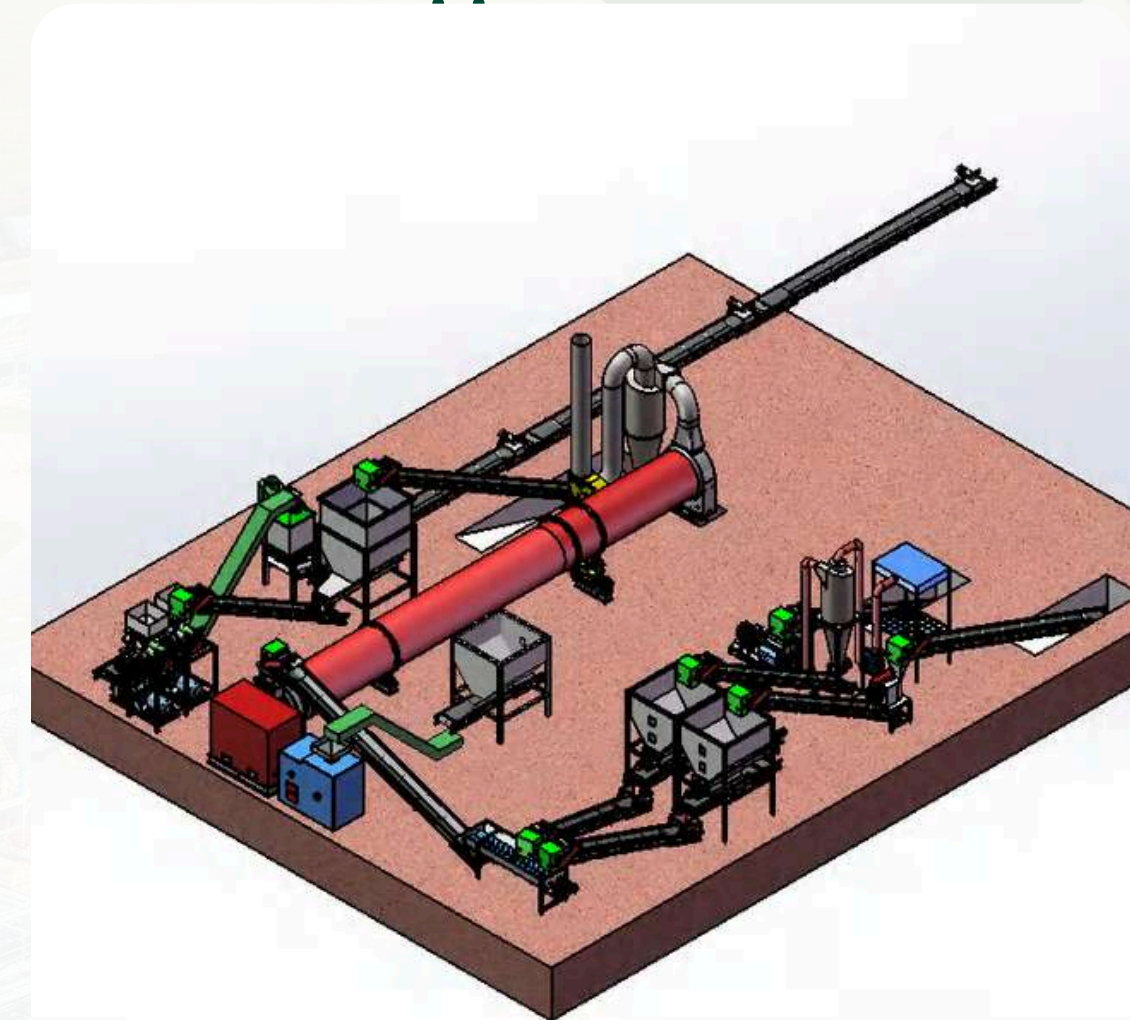
An eco-friendly process to convert agriculture, forestry, and industrial waste into solid blocks of biofuel. Cylindrical-shaped Briquettes and Pellets are made with high mechanical pressure; using Binderless Technology; removing the need for any chemicals.

- Collect stubble from the farmers

- Collected stubble goes to the production plant

- Compression of waste without the use of chemicals & adhesives

- Manage orders & shipping to our clients from our warehouse



Manufacturer

- Aggregated Bulk Orders
- Brand-Building With Retailers & End-Customers
- Access To Pan-India Retailers
- Hassle-Free Deliveries
- Approach of a sustainable cycle of waste to energy conversion
- Stubble sold as raw agricultural material or as biomass briquettes & pellets

Creating strong Positive Impact on to The Society

..

Shubhshree Biofuel For Society



Environment Sustainability & Economic Empowerment

- Job Creation
- Enhancement of Rural Sector Financial Inclusion
- Awareness regarding the negative impacts of stubble burning
- An additional source of revenue
- Skills Development



Society

- Reduction in pollution, increasing quality of life
- Saving Costs, Ushering in clean energy compliances, bettering health
- Employment benefits – 750-1,500 jobs are created per day through the biomass supply chain
- Higher-income to farmers

Creating strong logistics connectivity to Manufacturers

..

Shubhshree Biofuel For End User



Our end customers are organizations with furnaces & power plants

Provide eco-friendly, cost ., effective & regulatory ,compliant fuel alternatives to traditional fossil fuel.

Help them reduce their carbon footprint by complying with environmental regulation

A viable solution to meet their green energy needs while ensuring operational efficiency.



End User

- Biomass SCM
- Biomass Briquettes & Pellets
- Industrial Boiler Operation & maintenance
- Steam supply contracts
- Biomass assessment & technical consultation
- Industry/Agri waste to Bio-CNG
- O&M of compressed biogas plant

Manufacturing Facility

Technology Utilized

- Advanced biomass processing with non-torrefied and torrefied pelletization & briquetting.
- Utilizes mechanical compression methods without chemicals, ensuring high calorific value output and environmental sustainability.
- Integrated with SOPs for quality, logistics, and manufacturing efficiency.



Certifications Held
ISO 9001:2015
Certified

Capacity Utilization
100%

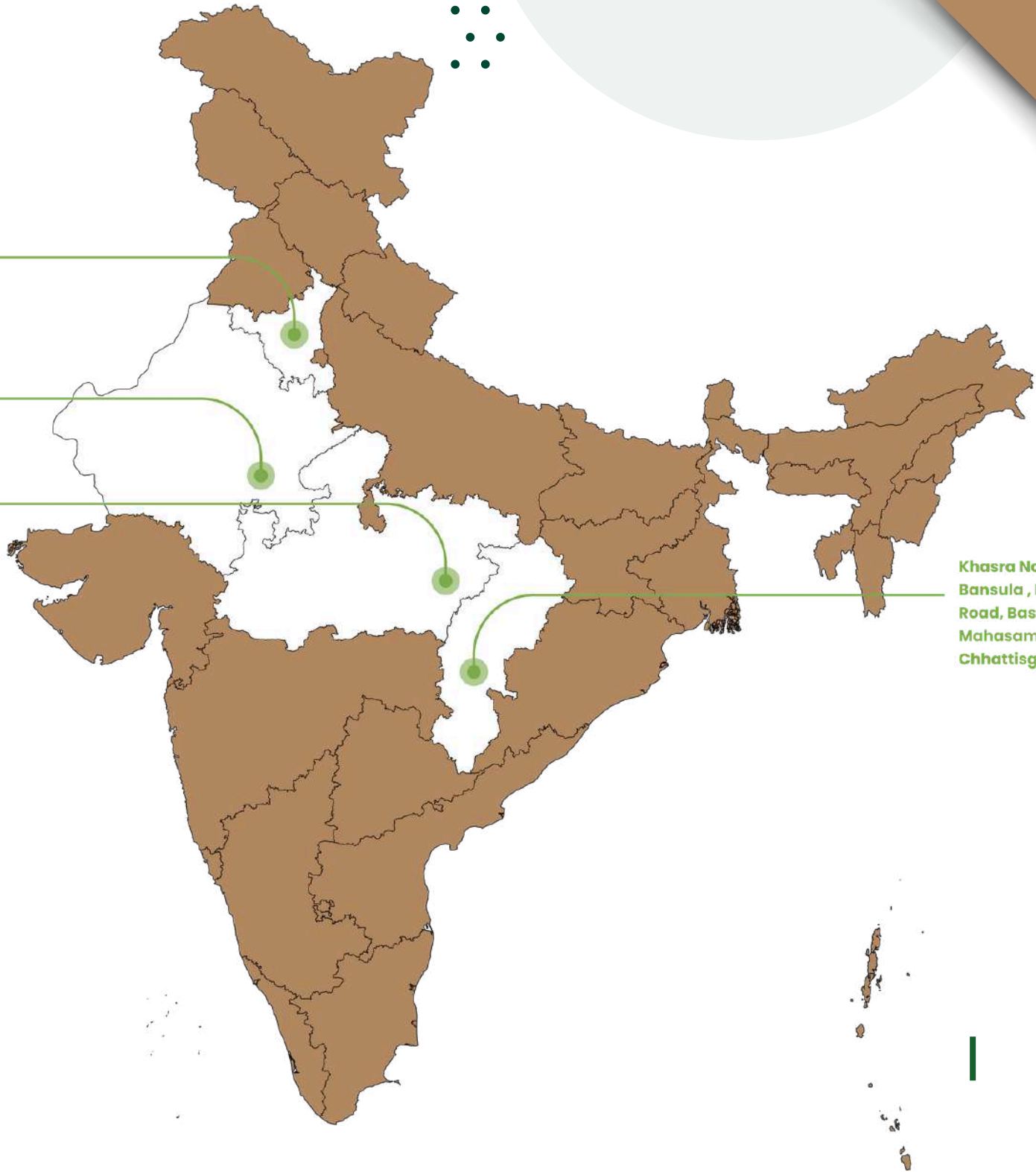
Installed Capacity
300 Tons

Khasra no. 299 uklana mandi,
Chandigarh road bhuna, 125111,
Haryana

Newai , Village Padhi, Main
Tonk Road, Newai . 304021

Village Chirahkala ,
Khoudiya , Gadawara ,
Narsinghpur , Madhya
Pradesh - 487551

Khasra No 1372 ,
Bansula , Basna Main
Road, Basna , Basna ,
Mahasamund ,
Chhattisgarh - 493554



Product Portfolio

At Shubhshree Biofuels Energy Limited, we offer a diverse range of high-quality bioenergy products, meticulously crafted to meet the growing demand for renewable and sustainable energy solutions. Our product offerings are categorized into three major segments:

Biomass Husk



Mustard Husk



Rice Husk



Bagasse



Groundnut Shells



Almond Shells



Cashew Shells

Biomass Briquettes & Pellets



Mustard Briquettes



Sawdust Briquettes



Groundnut Briquettes



Soyabean Briquettes



Pinewood Briquettes

Non –Torrefied Biomass Pellets



Mustard Pellets



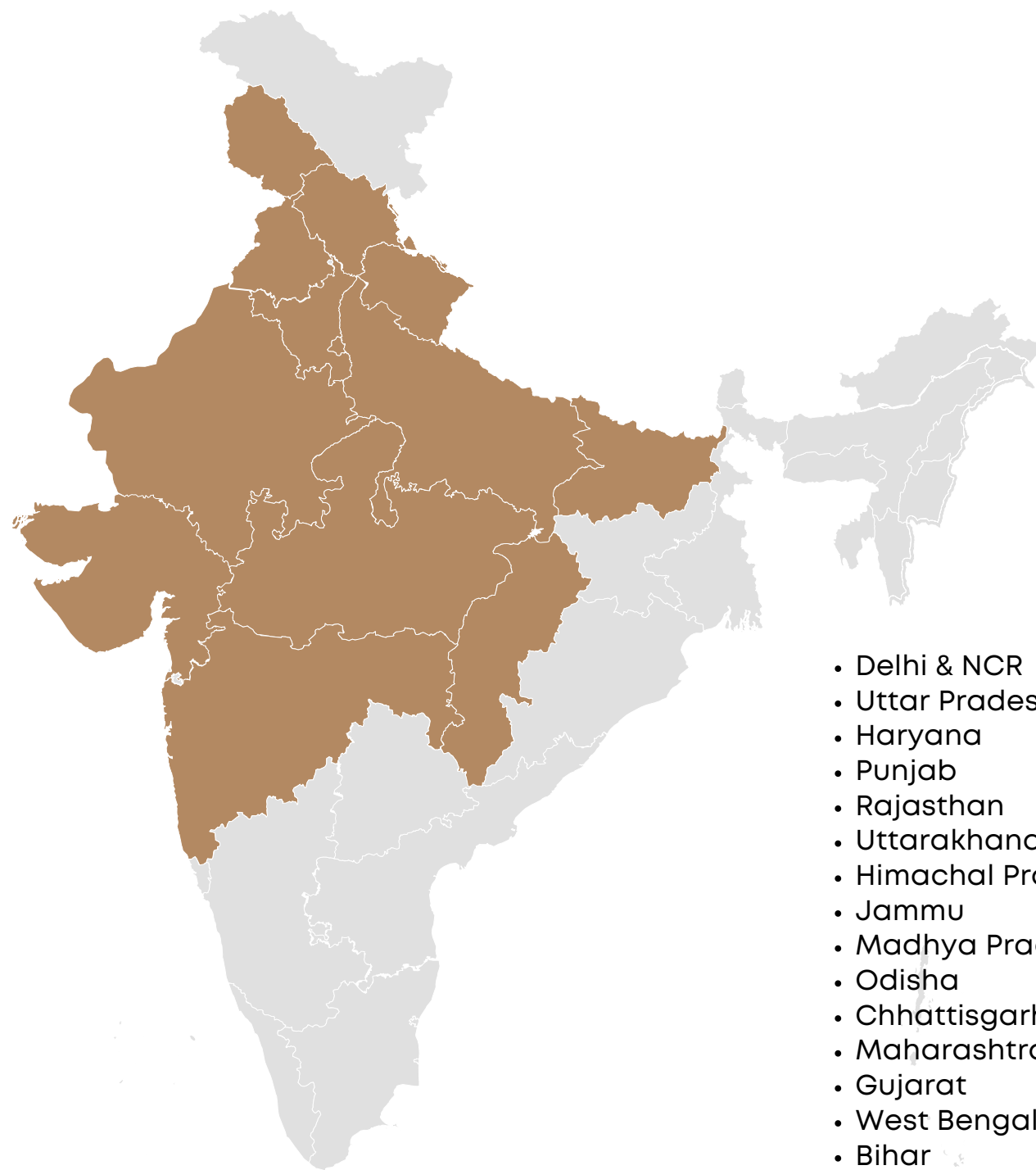
Paddy Straw Pellets



Groundnut Pellets

Geographical Footprint

At Shubhshree Biofuels Ltd, our impact spans all across India. With customers in states across the country, over half of our revenue generates from North India.



- Delhi & NCR
- Uttar Pradesh
- Haryana
- Punjab
- Rajasthan
- Uttarakhand
- Himachal Pradesh
- Jammu
- Madhya Pradesh
- Odisha
- Chhattisgarh
- Maharashtra
- Gujarat
- West Bengal
- Bihar
- Jharkhand



Office:

1. PN . 8 Ganesh Vihar -B, Pandit TN Mishra Marg, Nirman Nagar, Jaipur - 302019
2. 389 P -390 , Venture X, 1st floor, Sector 29 , Gurugram Haryana, 122022

Clientele Dynamics



Industries we serve

Shubhshree Biofuels cater to a wide variety of clients including



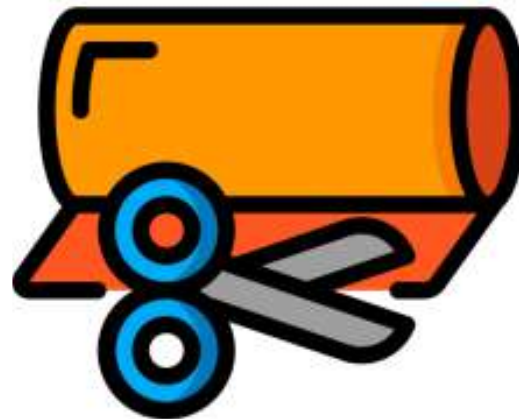
CERAMIC



PHARMA



FABRICS & TEXTILE



FOOD PROCESS



DYEING PLANTS



LIQUOR PLANTS



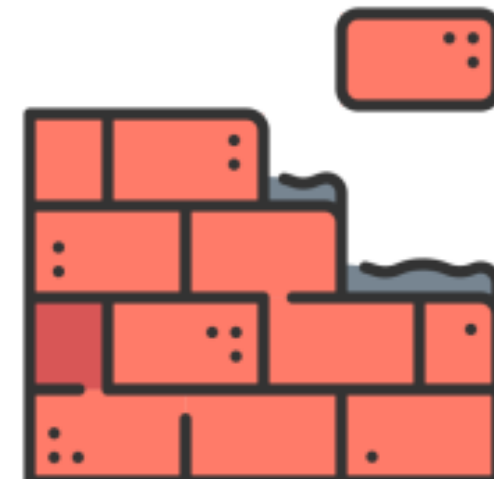
LEATHER INDUSTRIES



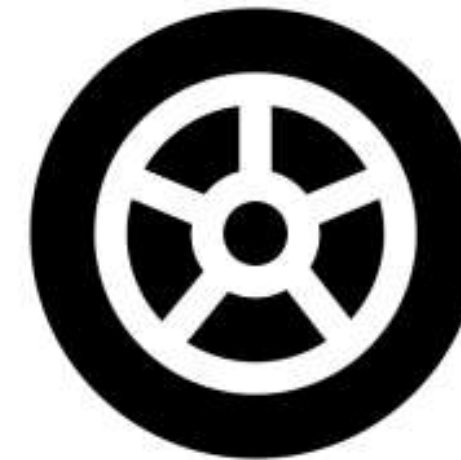
SPINNING MILL



COTTON MILL



**BRICK WORK
UNITS**



TYRE INDUSTRY

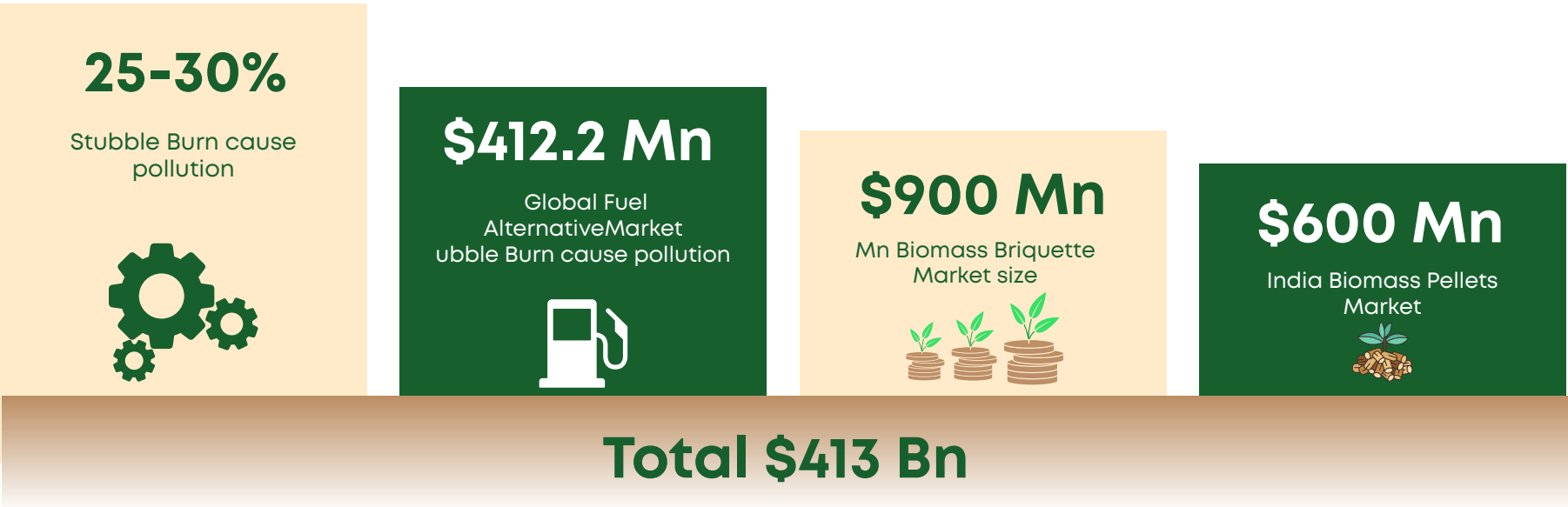


**POWER
STATION**



Opportunity Analysis

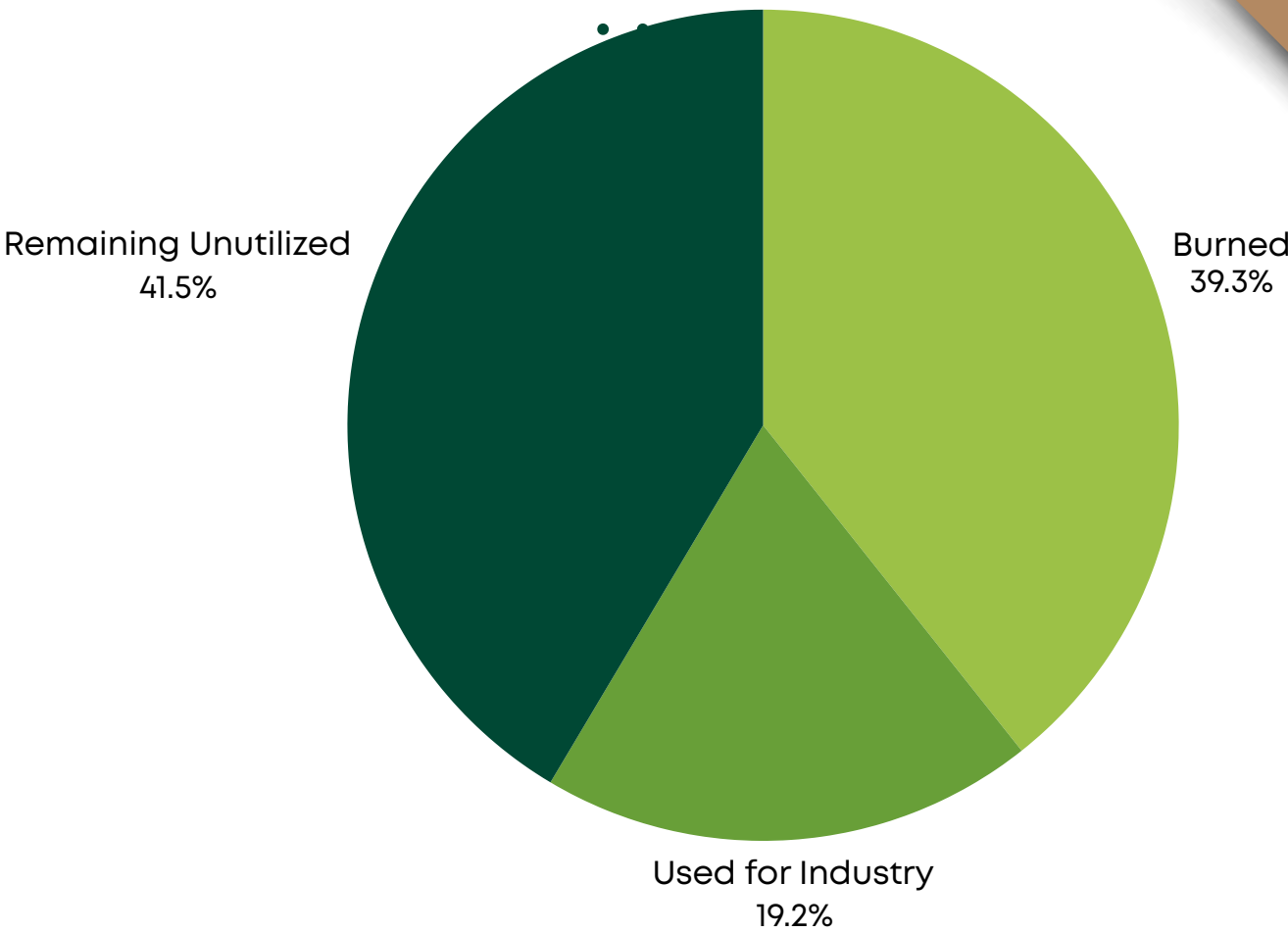
\$21.68 Bn TAM in 2023



India generates over **683 million tonnes** of agricultural residue annually, a vast portion of which remains either unutilized or openly burned

Shubhshree Biofuel is uniquely positioned to capitalize on this opportunity. With operations already active in **over 20 thermal power plants** and an ambitious target to **reach 50+ plants** by fiscal year-end, the company is emerging as a **front-runner in India's bioenergy transformation.**

By turning agricultural residue into biomass fuel, Shubhshree not only addresses critical environmental concerns but also **taps into a resilient, policy-backed demand.**



Breakdown of surplus residue

Category	Quantity (Mt)	Notes
Domestic Use	404	Fodder, compost, rural fuel
Surplus Residue	234	Residue after domestic use
Miscellaneous	45	Not yet tapped
Total Agricultural Waste	683	100% crop residue



Industry Overview

Solid Biomass Industry – Growth Trajectory & Market Outlook

India’s solid biomass fuel sector is undergoing rapid evolution, unlocking long-term growth potential for players like Shubhshree:

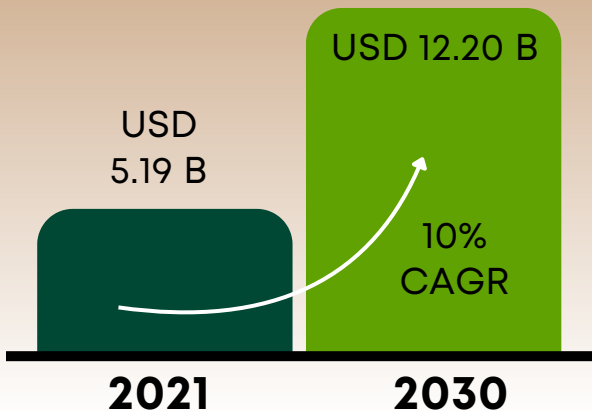
Surplus Biomass Potential

India produces ~228 million metric tons (MMT) of surplus agricultural biomass annually, yet less than 20% is tapped—indicating vast supply-side headroom.

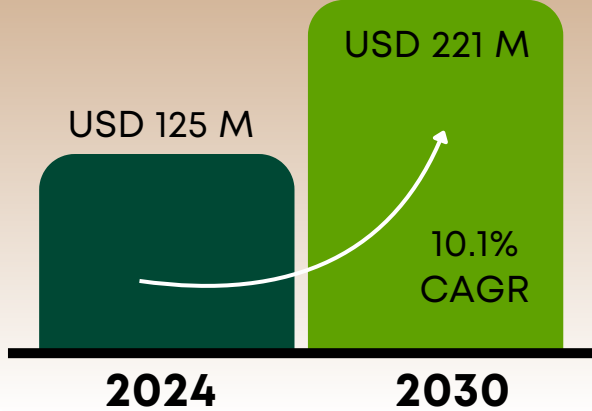
Installed Biomass Power Capacity

Forecasted growth from 11.58 GW (2025) to 14.97 GW by 2030 at a 5.27% CAGR, driven by rising industrial adoption and government mandates.

Solid Biofuel Market

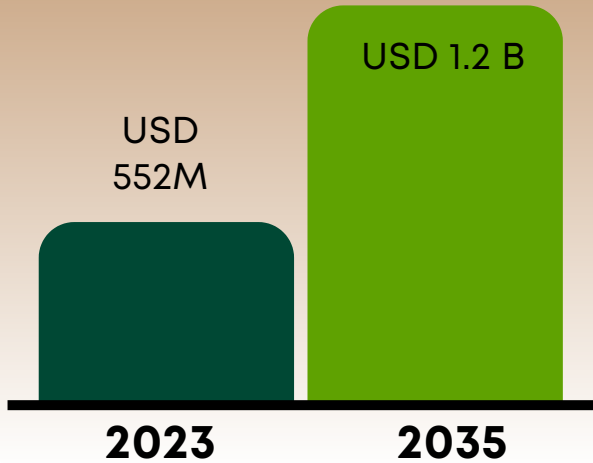


Biomass Boiler Market

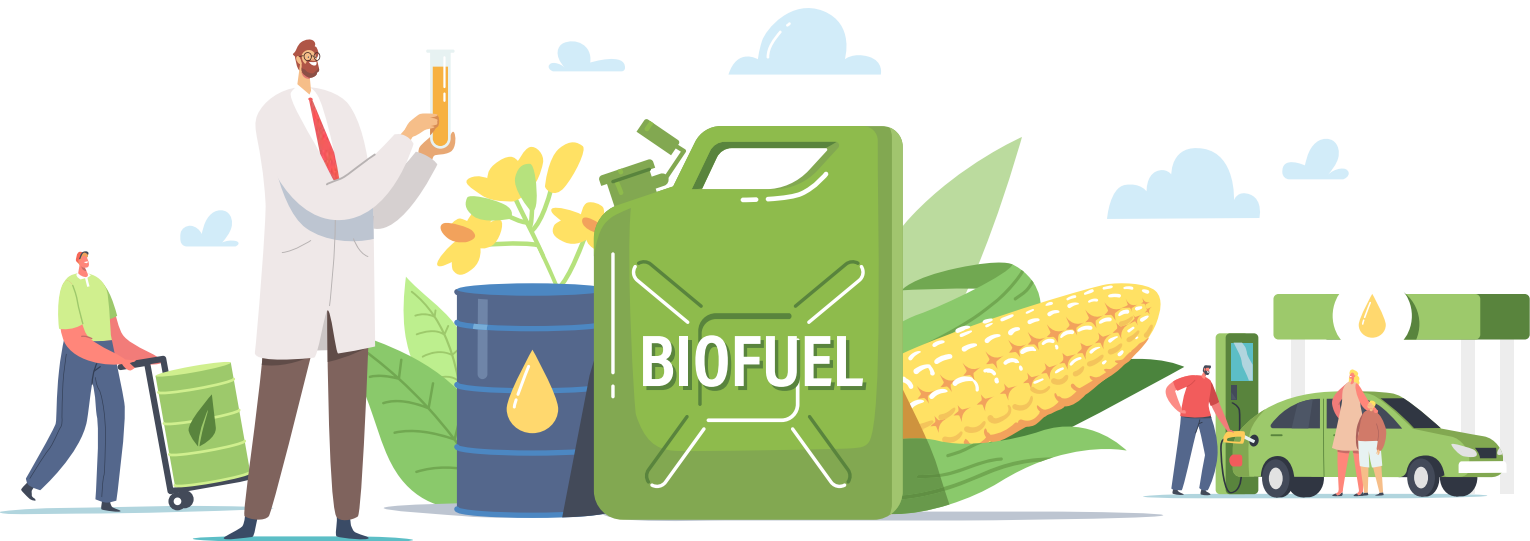


led by thermal energy demand

Biomass Pellets Market



supported by power sector demand and surplus state biomass availability.



Competitive Strengths

Experienced Team & Sector Expertise

A highly skilled and professional team with extensive experience in biomass supply chain management, ensuring efficient and reliable operations.

Integrated End-to-End Operations

Complete control over sourcing, processing, and distribution of biofuels, backed by stringent quality control protocols.

State-of-the-Art Manufacturing Facility

In-house modern manufacturing setup with advanced technology to ensure scalability, precision, and product innovation.

Customized & Cost-Effective Solutions

Offering tailor-made briquettes and pellets, ensuring affordability, flexibility, and alignment with diverse customer requirements.

All-in-One Service Model

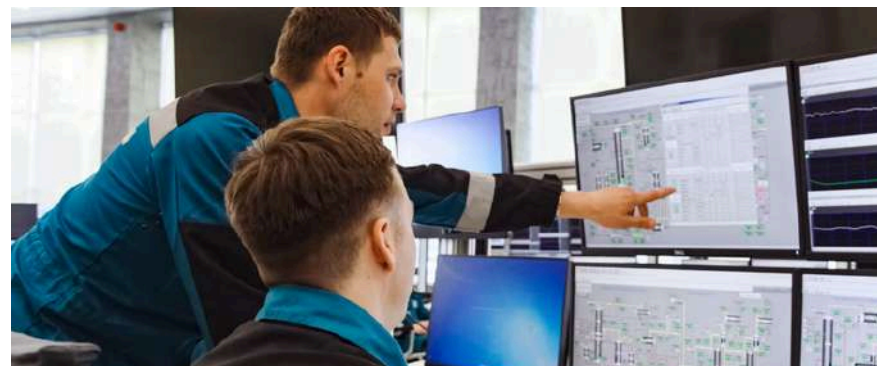
From consultancy to long-term supply contracts, we provide comprehensive biomass fuel solutions under one roof, enhancing client convenience and loyalty.

Sustainability & Environmental Focus

Core focus on recycling agricultural waste into clean energy, contributing to India's renewable energy goals and sustainable future.



Execution & Expansion



Operational Strength:



- Shubhshree Biofuel continues to outperform in a fragmented market dominated by unorganized, small-scale players with limited scalability
- The company's structured operations, integrated supply chain, and expanding manufacturing footprint give it a distinct competitive edge.



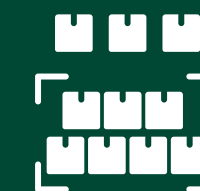
Growth Outlook:



- In FY 2023–24, Shubhshree Biofuel delivered strong revenue growth, highlighting its growing market presence and operational efficiency.
- For the current year, revenue is projected to rise over 50%, driven by increasing demand for sustainable fuel and stronger customer traction.
- Over the next two years, the company aims to more than double its topline, backed by deeper industrial adoption, long-term offtake deals, and the broader shift toward clean energy.



Capacity Expansion:

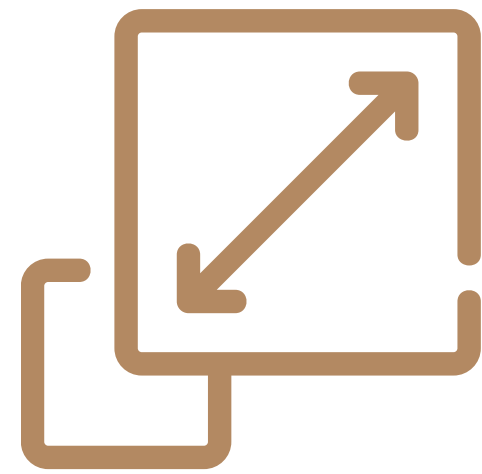


- Manufacturing capacity has expanded threefold, with new plants established closer to raw material sources.
- This has not only enhanced operational efficiency and improved margins but also deepened the company's regional presence while creating meaningful rural employment.

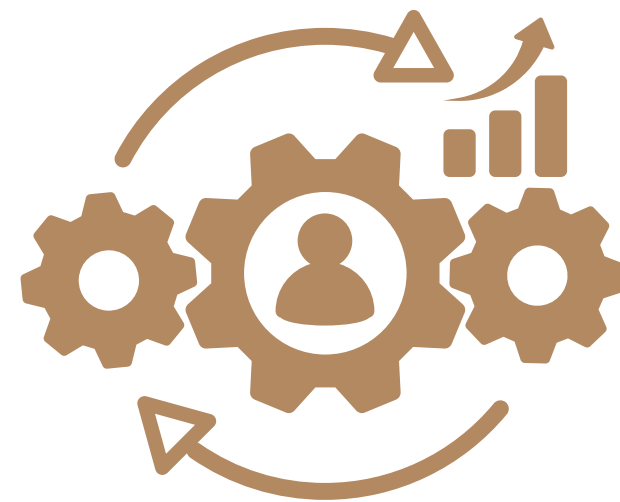
With clear visibility on demand, execution capabilities, and margin improvement levers, Shubhshree is well-positioned to strengthen its leadership in India's solid bioenergy sector and deliver sustained value for investors.

Technology-Backed Scale & Strategic Vision

Shubhshree Biofuel combines global technology standards with localized execution to build a scalable, future-ready platform. The company utilizes imported core equipment, such as high-efficiency pressing units, to ensure product durability and operational consistency.



SCALABLE PLATFORM



HIGH EFFICIENCY



PRODUCT DURABILITY



OPERATIONAL CONSISTENCY

Complementing this, Shubhshree integrates indigenously built systems — including conveyors, handling mechanisms, and support infrastructure — to optimize cost and ensure adaptability to regional conditions.



Exhibition Attended

Biofuel Expo 2025

Location: India Expo Centre, Greater Noida, Uttar Pradesh

Dates: 04th to 06th June 2025

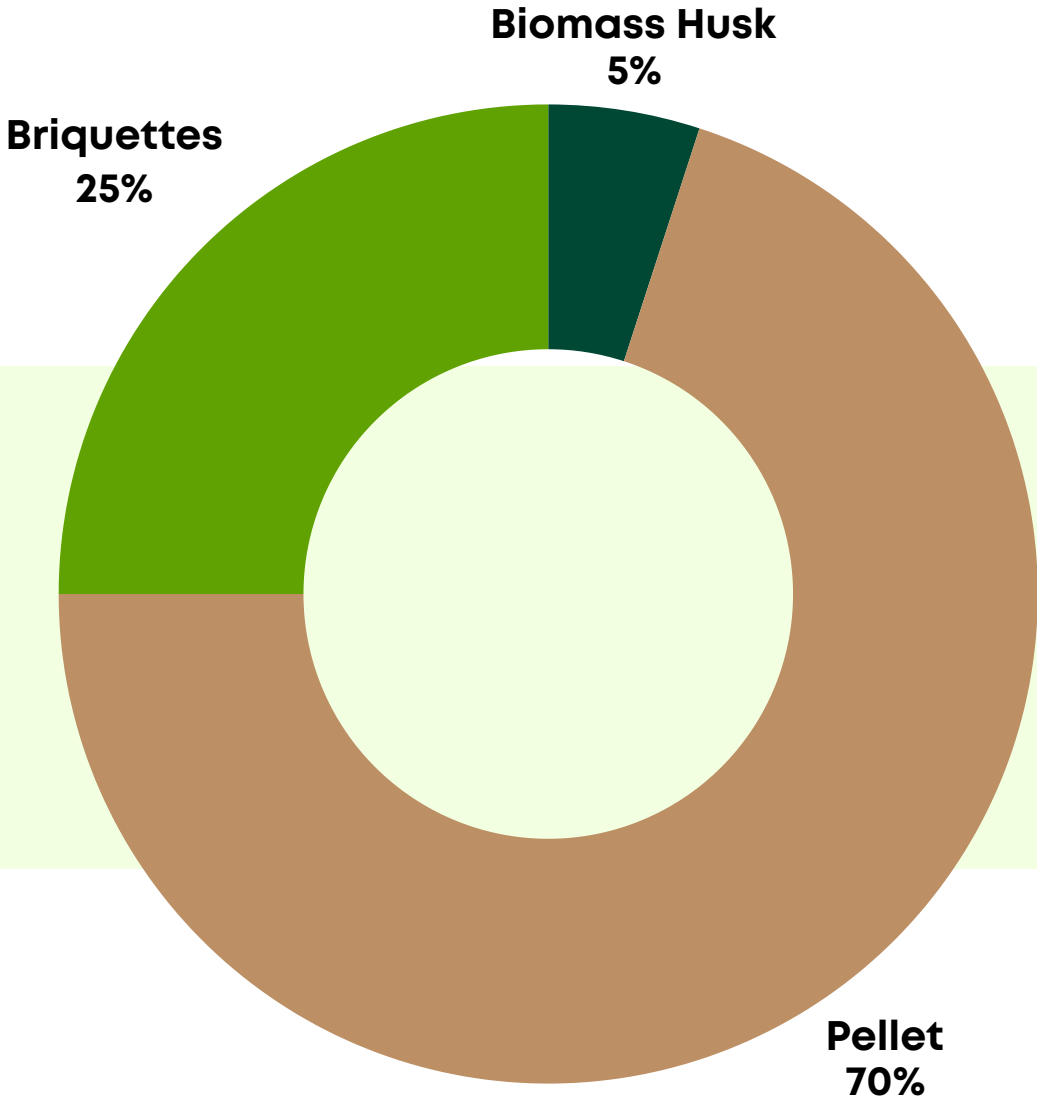


Biofuel Expo 2025 was a prominent event focused on sustainable energy solutions, particularly advancements in biofuels and alternative energy technologies. The expo brought together industry leaders, innovators, policymakers, and environmental stakeholders to showcase the latest developments, explore partnerships, and discuss the future of green energy in India and beyond.

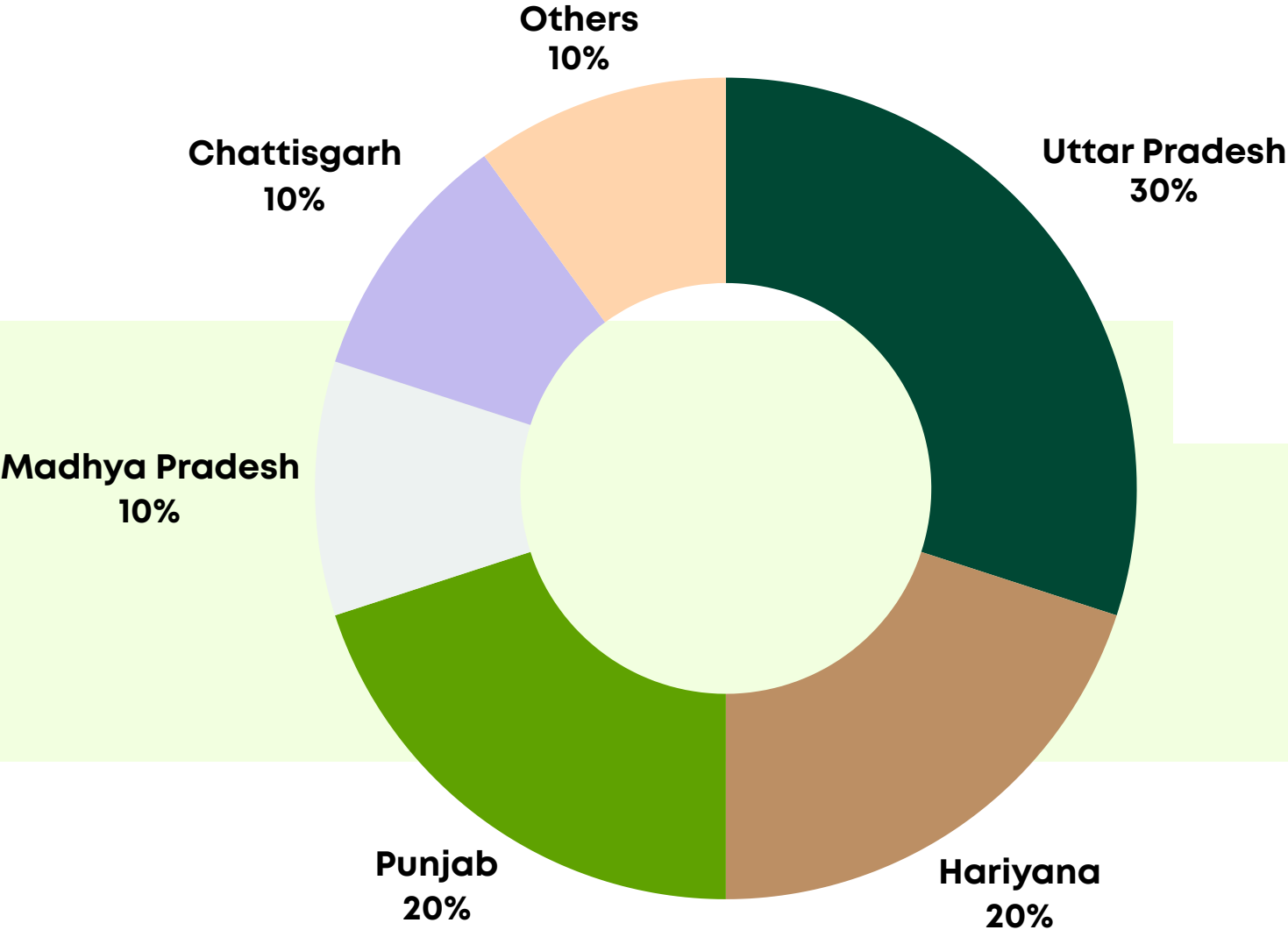


Revenue Breakup

Based on type of products



Geographical revenue Bifurcation



Profit & Loss Statement



(₹ in Lakhs)

Particulars	FY 2024-25	FY 2023-24	YOY%	FY 2022-23
Revenue from Operations	16,266.05	9,414.60	72.77%	5,861.60
Other income	63.99	73.71	(13.19%)	109.63
Total income	16,330.04	9,488.31	72.11%	5,971.23
Total Expenditure	15,203.17	8,991.20	69.09%	5,635.17
EBITDA	1,126.87	497.11	126.68%	336.06
EBITDA Margin	6.93%	5.28%	31.20%	5.73%
Depreciation	22.08	13.45	64.16%	7.54
Interest	35.18	21.86	60.93%	4.60
Profit before Tax	1,069.61	461.80	131.62%	323.92
Prior period expenses/(income)	-	1.99	0.00%	-
Tax	260.68	133.48	95.30%	80.70
PAT	808.93	330.31	144.90%	243.22
PAT Margin	4.97%	3.51%	41.75%	4.15%
EPS	17.54	8.62	103.48%	6.36



Balance Statement



(₹ in Lakhs)

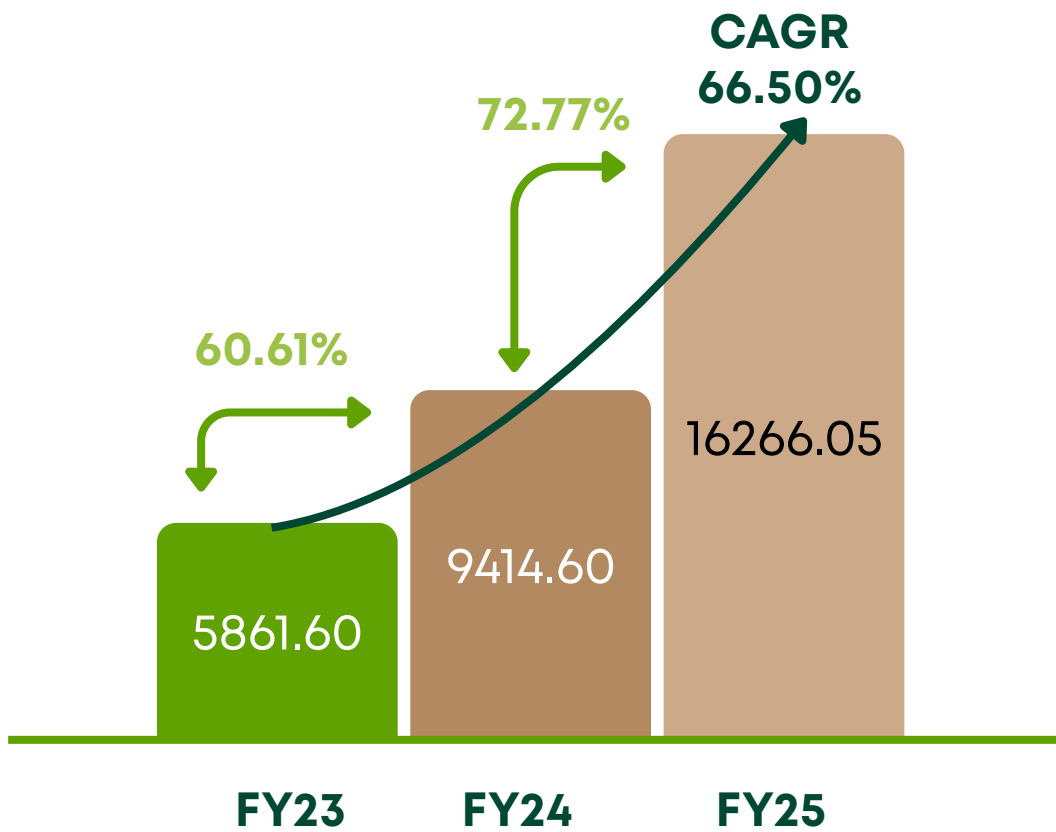
Particulars	FY 2024-25	FY 2023-24	FY2022-23
Equity Capital	524.20	385.00	1.00
Reserves	2,502.13	326.27	254.94
Minority Interest	0.22	-	-
Borrowings	838.46	53.44	85.52
Other Liabilities	1,210.03	632.14	249.98
Total Liabilities	5,075.04	1,396.85	591.44
Fixed Assets	326.27	122.16	52.93
Investments	527.50	66.67	0.00
Cash & Cash equivalents	884.99	126.11	120.12
Other Assets	3,336.28	1,081.91	418.39
Total Assets	5,075.04	1,396.85	591.44



Financial Analysis

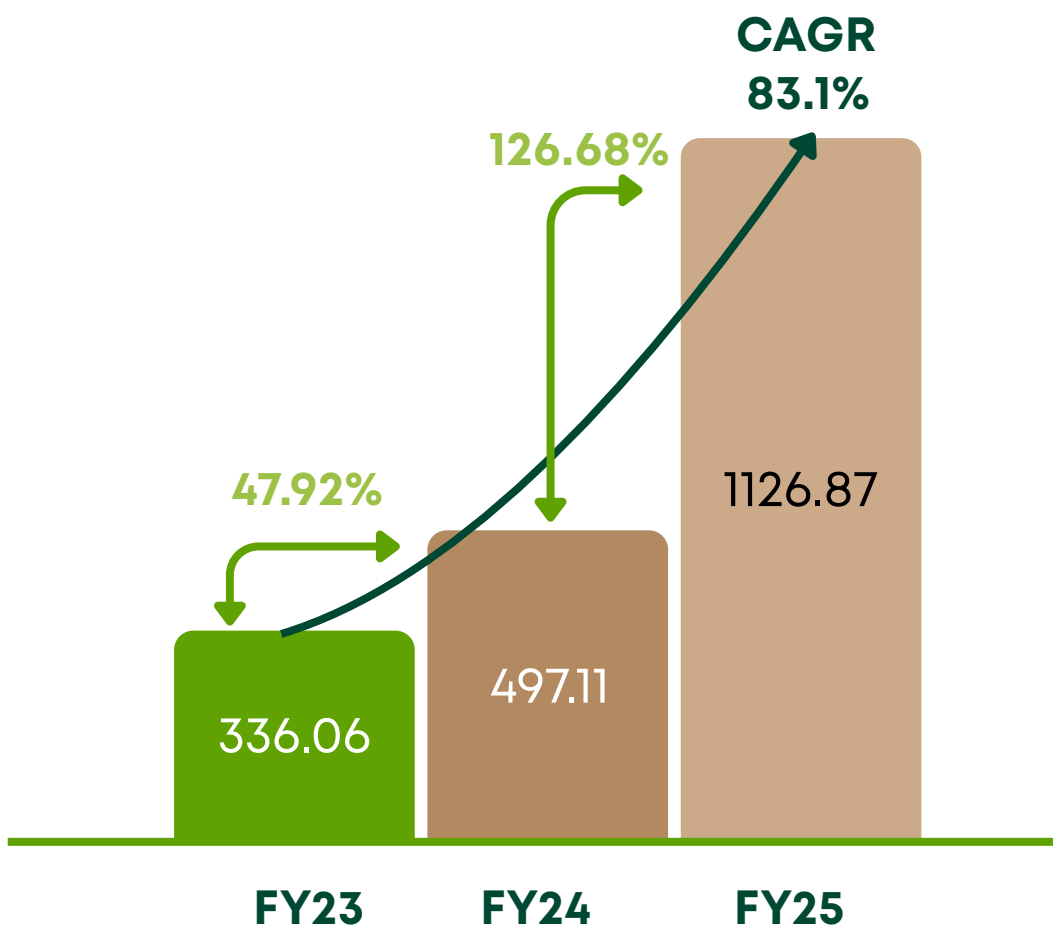
Revenue from Operations

(₹ in Lakhs)



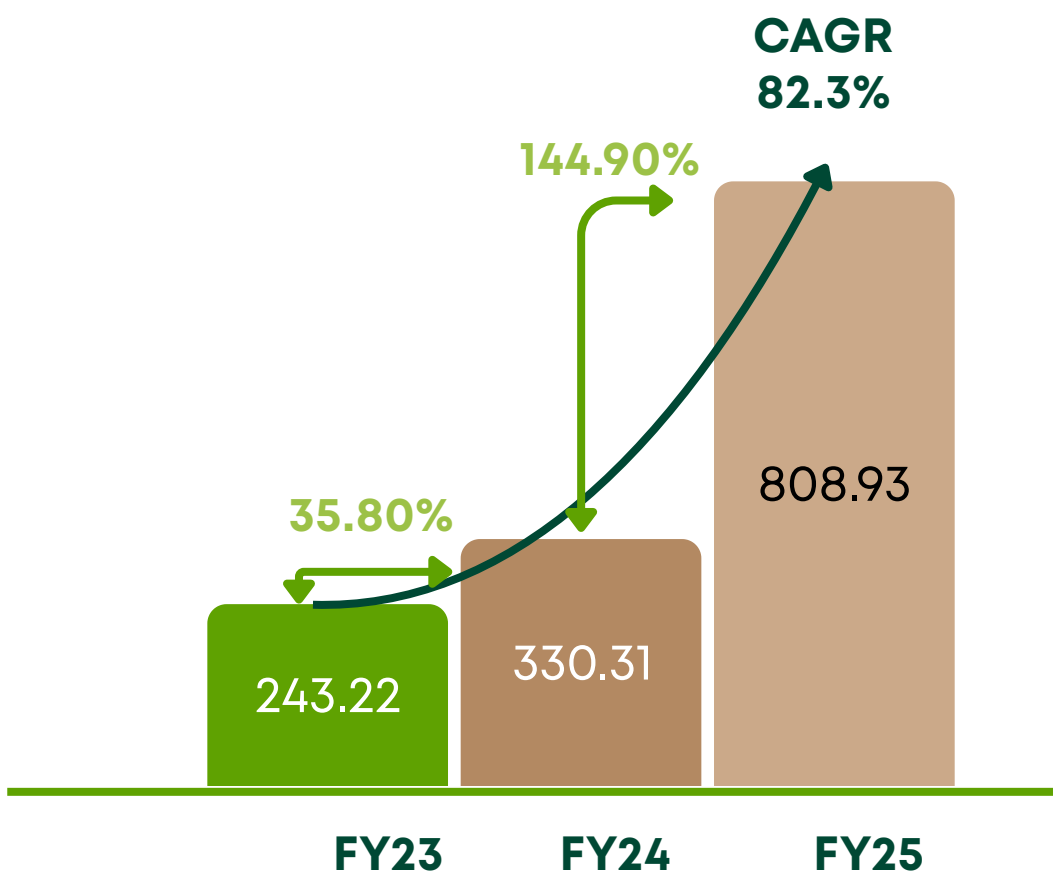
EBITDA

(₹ in Lakhs)



PAT

(₹ in Lakhs)





Shubhshree
Biofuels Energy Ltd.

THANK YOU



www.shubhshreebiofuels.co.in



ir@biomassfuel.co.in

INVESTOR RELATION



FINPORTAL



Abhishek Bhutra | Himanshu Jain
+91 80006 85556 , +91 89051 81853
ir@finportal.in

